

	1
1	3
1.1	3
1.2	3
1.2.1	3
1.2.2	4
1.2.3	5
1.3	5
1.4	5
1.4.1	5
1.4.2	7
1.5	7
1.6	8
1.7	9
2	10
2.1	10
3	12
3.1	12
3.2	14
3.2.1	14
3.2.2	14
3.2.3	15
3.2.4	15
3.2.5	15
3.2.6	16
3.3	17
4	18
4.1	18
4.1.1	18
4.1.2	18
4.1.3	18
4.1.4	19
4.1.5	19
4.1.6	20

4.1.7	21
4.1.8	21
4.1.9	23
4.2	23
4.2.1	23
4.2.2	24
4.2.3	24
4.2.4	26
4.2.5	26
5	27
5.1	27
5.2	27
5.3	27
5.3.1	27
5.3.2	27
5.3.3	28
5.4	28
5.5	29
5.6	30
6	31
6.1	31
6.2	32
6.3	33
6.3.1	34
6.3.2	34
6.4	34
6.5	34
6.5.1	35
6.5.2	37
6.6	38
6.6.1	38
6.6.2	38
6.7	38
6.7.1	38
6.7.2	39
6.7.3	41

6.7.4	41
6.7.5	41
6.8	41
6.8.1	41
6.8.2	41
6.8.3	42
6.9	42
6.9.1	42
6.9.2	43
6.9.3	43
6.9.4	44
7	45
7.1	45
7.1.1	45
7.1.2	45
7.1.3	45
7.2	45
7.3	46
7.4	46
7.5	46
7.6	46
7.7	47
7.8	47
8	48
8.1	48
8.1.1	48
8.1.2	48
8.1.3	49
8.2	50
8.2.1	50
8.2.2	51
8.2.3	51
8.2.4	51
9	53
9.1	53
9.1.1	53

9.1.2	53
9.1.3	53
9.2	53
9.2.1	54
9.2.2	54
9.2.3	54
9.3	55
9.4	55
10	56
10.1	56
10.2	56
11	57
12	58
12.1	58
12.2	59
12.3	59

6

I

4

2008 8

2008 67

2008 12

2011

3

2011 231

2017 7

2017

269 2017 3

2017 4

2019 10 30

91460000708873536T001V

2019 10 30

2022 10 29

2020 3

460105-2020-003-L 2020

3

2

1

202046010500000020 2021 3 3

2021 14

14

2015

)

2016

1

1.1

1

2

3

4

5

1.2

1.2.1

1 2014 4 24 2015 1 1

2 2017 6 27 2018 1

1

3 2018 10 26

4 2020 4 29 ,2020 9

1

5 2014 8 31 2014 12 1

6 2019 4 23

7 2016

8 17 -2011

9 2012 98

10 2012 77

11 2014 34

	12			2010	113	-2010	
	13						2015
4							
	14			2014	119		
	15			2020			2020 1
	16			2007	11	1	
	17						2009 130
	18			2009	62		
	19						
		2012	119				
	20						
	2016	84					
	21						2016
74							
	22						
	2018	8					
	23			2011	5	1	
	23						2010 295
1.2.2							
	1			GB18218-2018	2019	3	1
	2			GB50016-2014			
	3						GB20576-GB20602
	4			HJ169-2018			
	5				2005	272	
	6			GB13690-2009			
	7						GB3838-2002
	8						GB3095-2012
	9			HJ589-2010			
	10						GBZ2-2007
	11			2016			

12

GBZ1-2010

13

GBZ2-2007

14

14

	I	II	III	IV
--	---	----	-----	----

1.4.1.1**I**

1		30		100
2			5	
3			1	
4				

1.4.1.2**II**

1		10	30	50	100
2			1	5	
3			2000		1
4					

1.4.1.3**III**

1		3	10	10	50
2			5000	1	
3			500		2000
4					
5					
6					

1.4.1.4**IV**

1		3		10
2			5000	
3			500	
4				

5

1.4.2

1.4.2.1

1

2

3

4

1.4.2.2

1

2

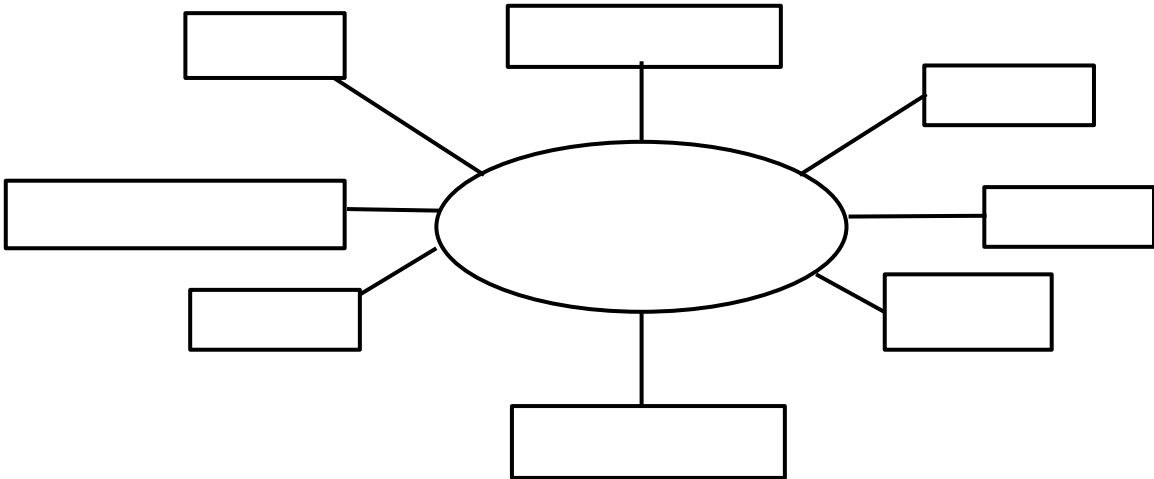
3

4

5

1.5

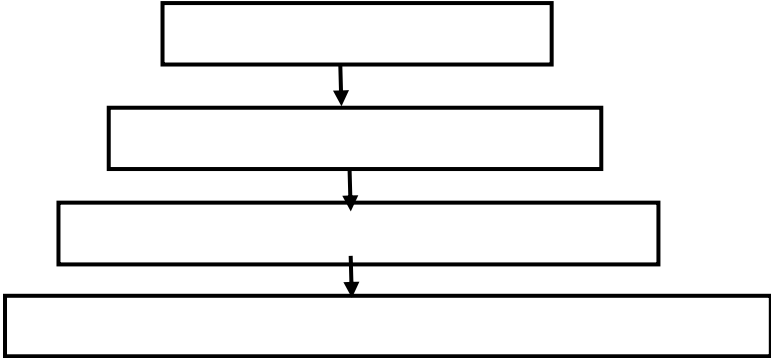
- 2
- 3
- 4
- 5



1.5-1

1.6

1.6-1



1.6-1

1.7

1

2

3

4

2

2.1

1

2

91460000708873536T

3

4

6

5

13907566852

6

C2770

7

2010 8

8

84893.2m²

9

200

8

300

10

I

11

2008 8

2008 67

2008 12

2011 3

2011 231

2017 7

2017 269

2017 3

2017 4

2019 10 30

91460000708873536T001V

2019 10 30

2022 10 29

2020 3

460105-2020-003-L

2020 3

2

1

202046010500000020

2021 3 3

2021 14

12

3

3.1

3

%

2

A

(0898-68725098)

(12369 0898-68723890)

(0898-68662526

0898-68530977

(110

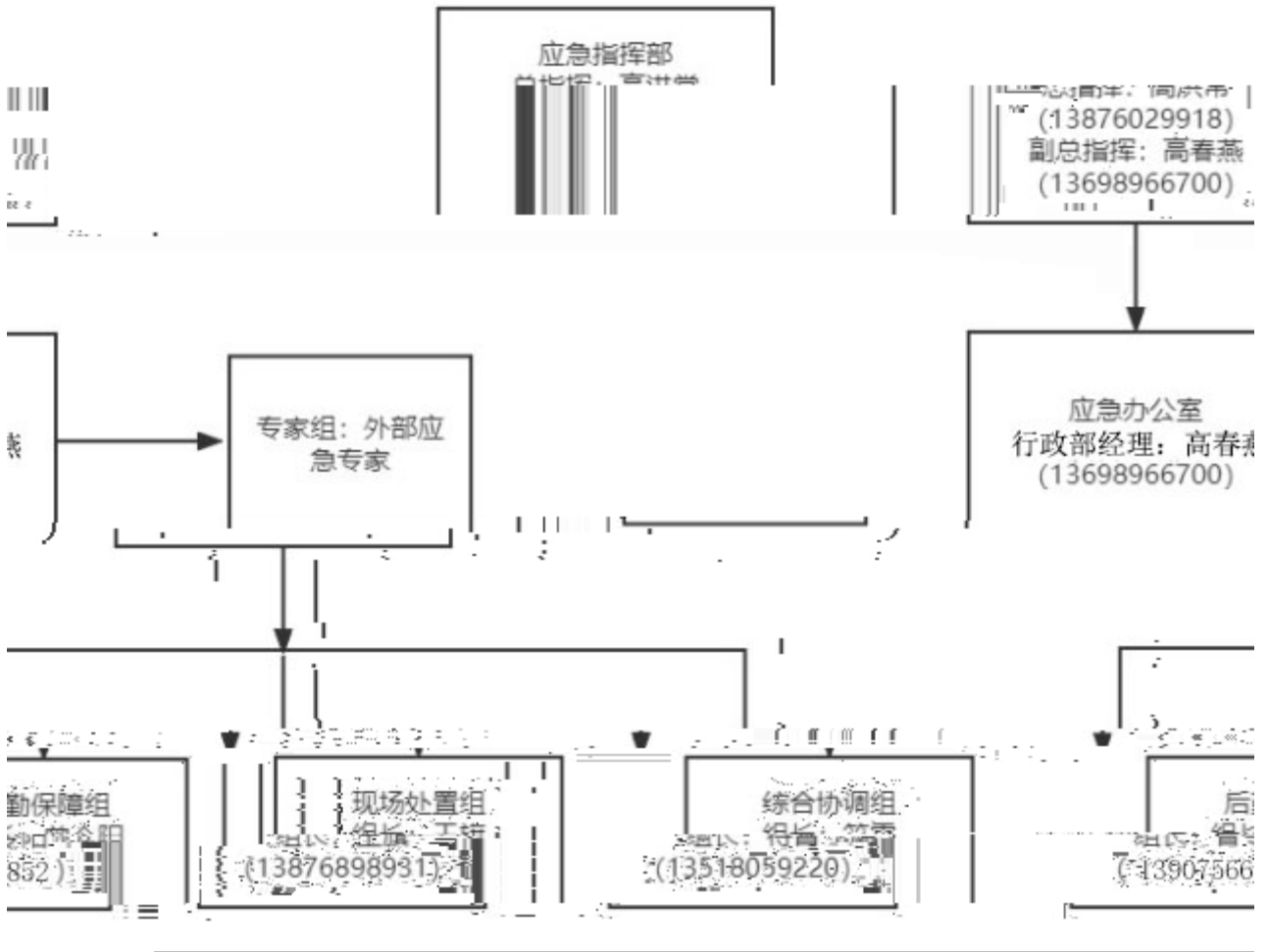
0898-68642548)

12369

119

B

3.1-1



3.1-1

A

B

C

D

E

F

G

H

I

3.2.3

A

B

C

D

3.2.4

EHS

A

B

C

D

E

3.2.5

- A
- B
- C
- D
- E
- F

3.2.6

- A
- B
- C
- D

3.2-1

			13876029918	66802086
			13698966700	68661669
		EHS	15120729544	/
			13876898931	68666690
		()	13687582430	68666690
		()	13876086407	68666690
		()	18976448547	/
		()	13637665486	/
			13518059220	/
			13518801629	66801782
			13016227087	68660882
			13907554057	66801782

			EHS	15120729544	/
				13518053136	68666690
				13907630313	/
				13698907330	/
				13518050978	68666690
				15109808876	/

3.3

3.3-1

1	24	0898-65333377	0898-65337757
2	24	0532-83889090	0532-83786554
3		0898—68724072	/
4		0898—66814771	0898—66814885
		0898—68631820	0898—68635212
5		0898—68612085	/
6		0898-65958505	/
7		0898-68662526	/
8		0898—66828110	/
9		0898—65580037	/
10		0898—68723816	/
11		12369	/
12		0898-68642548	/

4

4.1

4.1.1

1

2

3

4

(GB50016-2006)

5

6

4.1.2

”

24

“

1

1.5h

2

3

4

4.1.3

1

(GB50058--92)

1

2

3

2

%

&

3

4.1.4

“ ”

4.1.5

1

2

3

4

5

9

4.1.7

1

2

3

4

GB18597-2001

5

6

4.1.8

1

1

“ ”

()

1 2

2

3

1

2

4.1.9

1

2

1

2

1

3

4

5

1

2

3

4

4.2

4.2.1

4.3-1

4.3-1

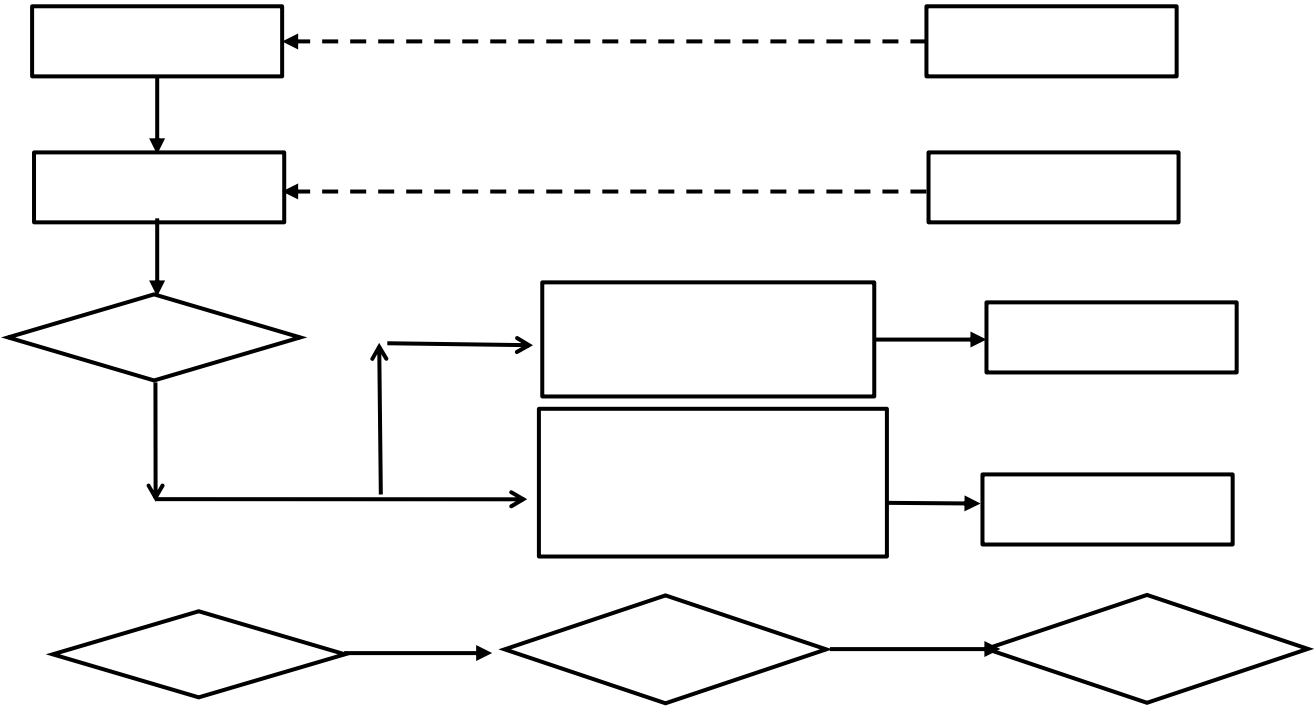
4.2.2

4.2.3

1

24

4.3-1



4.3-1

4.3-2

		13698966700
		13876029918

2

1

2

3

4

)

*

+

,

4.2.4

119

4.2.5

5

5.1

24

5.2

5.3

5.3.1

10

0898-68662526

5.3.2

10

5.3.3

1

2

3

4

5

2021

5.2.3

5.4-1

1			0898-68639900
2			0898-68535659
3			0898-68666165
4			0898-6863 9550
5			0898-68683061
6			0898-68631608
7			0898-60823456
8			0898-66816156
9			0898-31913302 0898-31913301
10			0898-66809876
11			0898-68620602 0898-68620959
12			0898-68600950
13			0898-68616709 0898-68616710
14			0898-68667158
15			0898-68689761

5.5

5.6

6

6.1

1

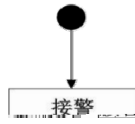
2

3

4

5

6



--	--

1

2

3

4

5

6

1

2

3

4

6.3

6.3.1

1

2

3

5

6.3.2

1

2

3

4

5

6

7

6.4

1

2

3

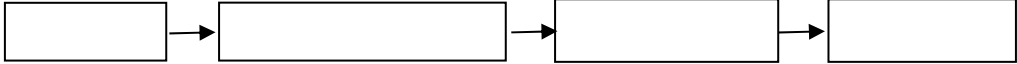
4

24

6.5

6.5.1

6.5-1

	
	<p style="text-align: center;">13876029918</p> <p style="text-align: right;">13698966700</p>
	C
	1. 120
	2.
	<p>1</p> <p>2</p> <p style="text-align: center;">2500</p> <p>3</p> <p>4</p> <p>1.</p> <p>2</p>
	<p>1</p> <p>2</p> <p>3</p> <p style="text-align: center;">500m</p> <p style="text-align: right;">25~50m</p> <p style="text-align: right;">100m</p>
	<p>1</p> <p>2</p> <p>3</p> <p>4</p> <p>5</p> <p>6</p>
	<p>A</p> <p>1</p> <p>2</p>

	3
	B
	1
	2
	3

6.5-2

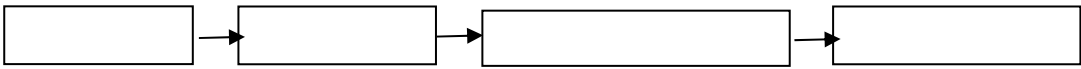
	13876029918 13698966700

6.5-3

13876029918

13698966700

6.5-4

	 <pre> graph LR A[] --> B[] B --> C[] C --> D[] </pre>
	13876029918 13698966700
	50m ³ /d

6.5.2

6.6

6.6.1

6.6.2

6.7

6.7.1

1

2

3

4

5

6.7.2

6.7.2.1

SO₂ NO_x TSP CO

75

3

2 10

1

GB3095-2012 2

6.7-1

6.7-1

		SO ₂ NO _x TSP CO		/		

%

&

,

(

)

6.7.3.2

1

pH COD

2

3

6.7.3

6.7.4

6.7.5

6.8

6.8.1

1

2

3

4

5

6.8.2

1

2

3

6.8.3

1

2

3

4

6.9

6.9.1

1

1

2

3

4

5

6

7

8

2

1

2

3

4

5

6

6.9.2

1

1

2

3

4

5

6

7

“ ”

8

9

10

1

2

3

4

5

6

7

8

6.9.4

1

2

3

4

5

6

7

7.1

7.1.1

7.1.2

7.1.3

7.2

7.3

1

2

3

7.4

7.5

1

2

7.6

1

2

3

4

5

6

7

8

7.7

7.8

1

2

3

8

8.1

8.1.1

3

8.1-1

8.1-1

				13876029918	66802086
				13698966700	68661669
		EHS		15120729544	/
				13876898931	68666690
			()	13687582430	68666690
			()	13876086407	68666690
			()	18976448547	/
			()	13637665486	/
				13518059220	/
				13518801629	66801782
				13016227087	68660882
				13907554057	66801782
		EHS		15120729544	/
				13518053136	68666690
				13907630313	/
				13698907330	/
				13518050978	68666690
				15109808876	/

8.1.2

8.1.3

8.1-2

8.1-2

					/
		2			13518074398
		6			
		3			
		2		1 2	
		39			13907566852
		1 600m 3			
		140			
		3		2 1	
		2			
		4			13518074398
		14			
		4			
		2			
		6			
		12			
		20			

		20			
		3			
		200			
		4			13518074398
		2			
		2 100m			
		2		1	
		3			
		1			

8.2

8.2.1

1

2

3

4

5

8.2.2**8.2.3**

8.2 1

8.2-1

1	24	0898-65333377	0898-65337757
2	24	0532-83889090	0532-83786554
3		0898—68724072	/
4		0898—66814771	0898—66814885
		0898—68631820	0898—68635212
5		0898—68612085	/
6		0898-65958505	/
7		0898-68662526	/
8		0898—66828110	/
9		0898—65580037	/
10		0898—68723816	/
11		12369	/
12		0898-68642548	/

8.2.4

8.2 3

8.2-3

1							13322061681
2							13876462388
3							13198938669
4							18907657399
5							13698997685
6							13379982363
7							13648659888
8							13707578919
9							13807630303
10							13006062682
11							13198906618
12							13876065085
13							13807561777
14							13976905563

9

9.1

9.1.1

1

2

3

4

5

6

7

9.1.2

9.1.3

9.2

9.2.1

9.2.2

1

7

ï

9.3

1

2

3

4

5

6

7

8

9

9.4

10

10.1

- 1
- 2
- 3
- 4
- 5

10.2

- 1
- 2
- 3
- 4
- 5

11

[- Q0-M2-E1 + - Q0-M1-E2]

12

12.1

1

HJ/T298

2

3

4

5

6

7

8

9

10

11

12

13

12.2

12.3